

5-Disassembly and Reassembly Instructions

[This page left intentionally blank]

Table of Contents

	Page No
Disassembly Instructions (also see the video clip on care point)	5
Reassembly Instructions (also see the video clip on care point)	8

[This page left intentionally blank]

Disassembly Instructions (also see the video clip on care point)



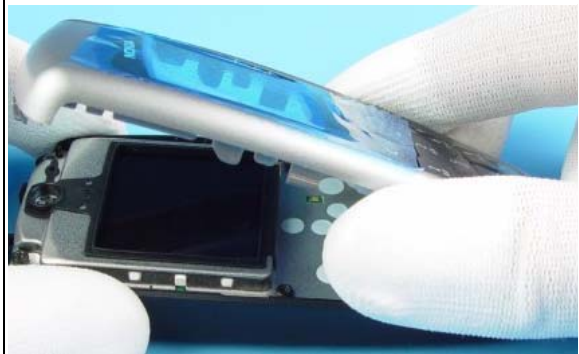
1) Needed tools for disassembly



2) Protect the Window with a protective film.



3) Press the A-Cover Lock before removing the B-Cover



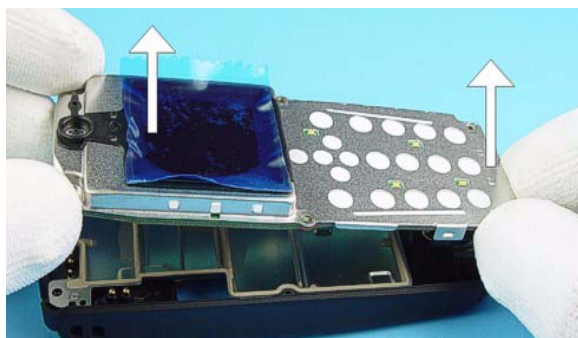
4) Lift the topside of the A-Cover and then remove it carefully.



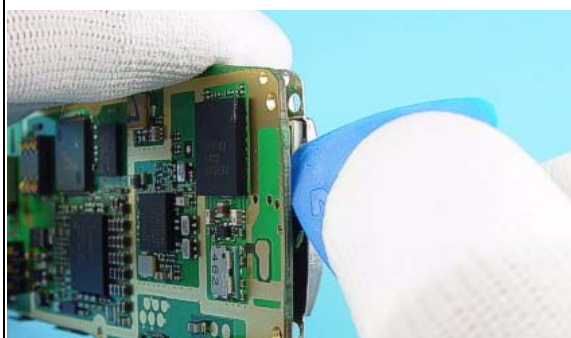
5) Remove Keypad, protect LCD and inner side window with a protective film.



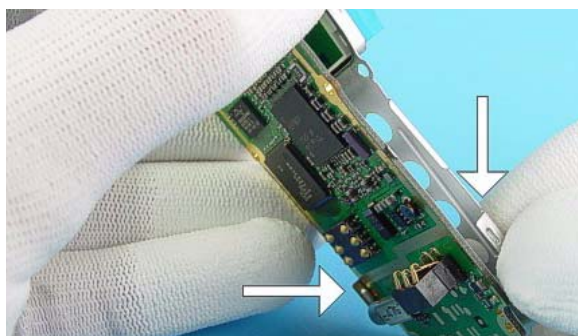
6) Remove screws by using the shown order.



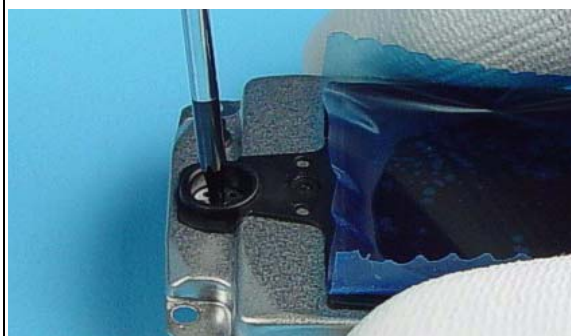
7) Lift up the C-Cover with the Engine Module vertical.



8) Open the LCD Connector with SRT-6 carefully.



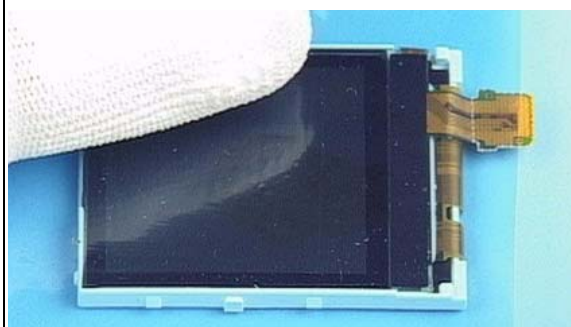
9) Separate the Engine Module from C-Cover.



10) Push out the Earpiece with the Torx driver



11) Press out the LCD Module while bending the C-Cover gently.



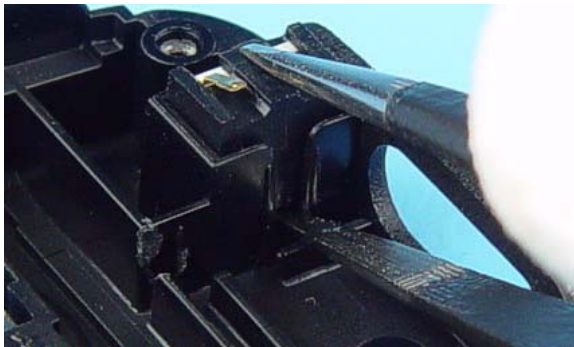
12) Protect the LCD Module with a film.



513) Remove the Shield from B-Cover.



14) Use a slotted screwdriver as a lever to remove the System Connector



15) Remove the Microphone with tweezers.



16) Unlock the plastic clips of the Antenna by use of tweezers.

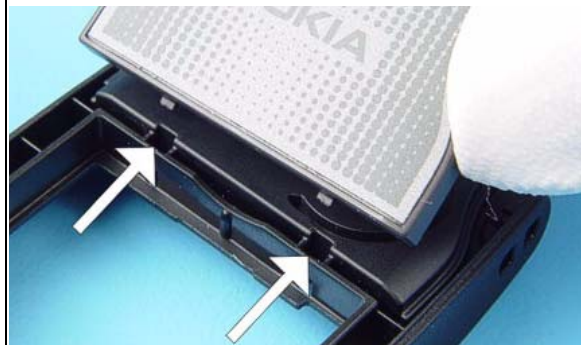


17) Lift up the Antenna at the top side first and remove it.

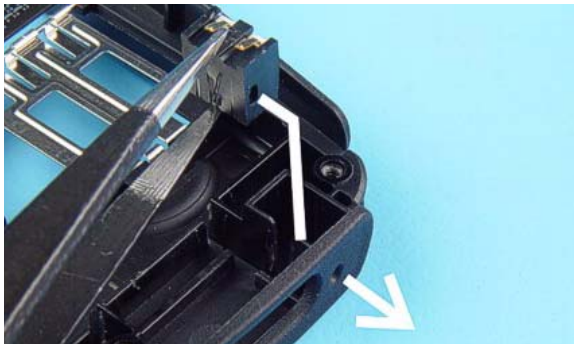
Reassembly Instructions (also see the video clip on care point)



1) Additional tool for assembly required.



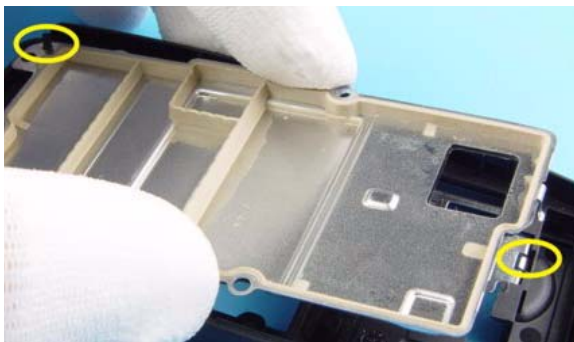
2) Place the Antenna at the bottom side first, than press it down slightly. Ensure that all plastic snaps click into their places.



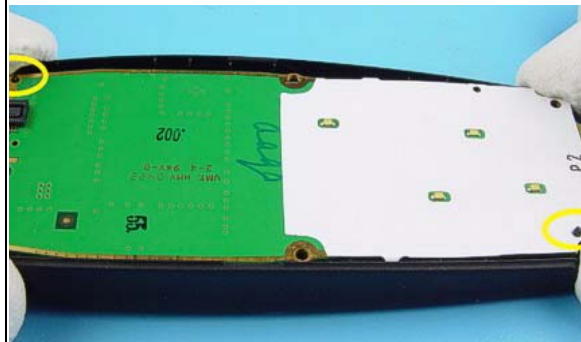
3) Mind the gap while placing the Microphone into the compartment



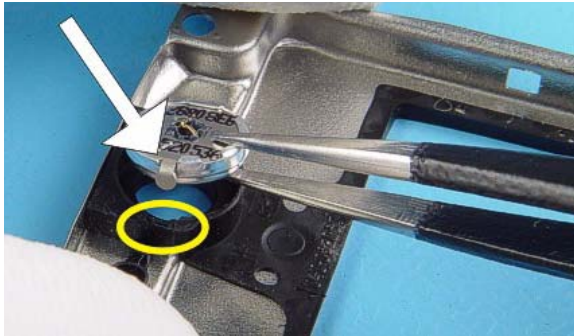
4) Place the System Connector to the D-Cover first, then fix it by pressing down gently



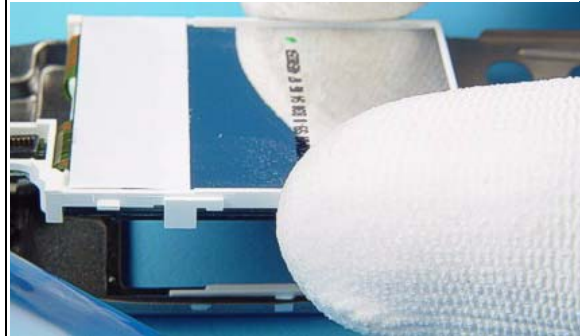
5) Mind the guiding while placing the Shields.



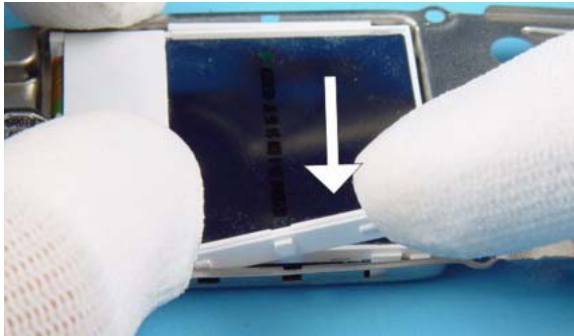
6) Mind the guiding while placing the Engine Module.



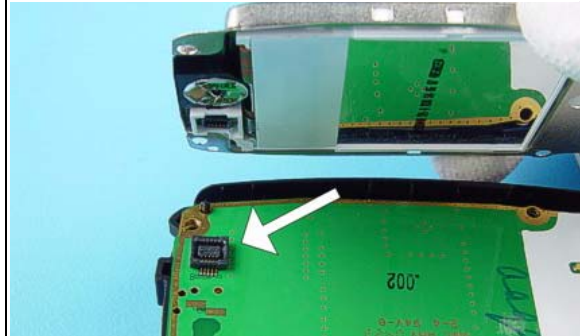
7) Place the Earpiece in the compartment correctly.



8) Peel of the protective film before placing the LCD Module into the C-Cover.



9) Fix the LCD Module into the C-Cover with the Locking Clips on both sides of the LCD Module.



10) Place the C-Cover with LCD Module. Ensure the correct connection.



11) To prevent damaging the plastic threads, first turn the screws slightly left to engage the thread and then tighten them slightly. After that, apply the torque (25Ncm) with the torque driver. Note the shown screwing order



12) Remove the protection film from the inner side window. Place the Keymat.



13) Place the upper part into the A-Cover and click all snaps into their places.



14) Complete the Phone with the B-Cover.